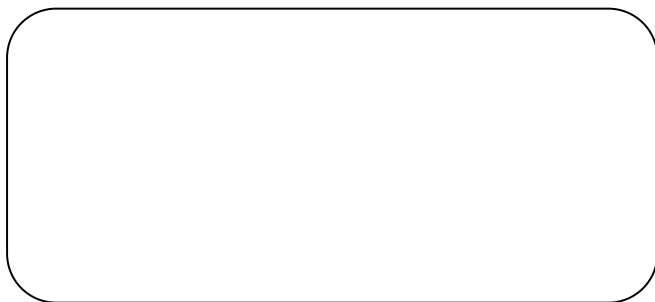




*Consiglio Nazionale delle Ricerche*

Ufficio di supporto tecnico-amministrativo

agli Istituti Spin, Officina dei Materiali, Nanoscienze



## **ALLEGATO 1**

AL CAPITOLATO TECNICO REGOLANTE LA GARA COMUNITARIA A PROCEDURA APERTA PER L'ACQUISIZIONE DELLA FORNITURA DI UN ANALIZZATORE DI ELETTRONI EMISFERICO E DI UN SISTEMA DI LENTI ELETTRONICHE CON DETECTOR E SENZA TARGET PER L'ANALISI 3D DELLO SPIN DEI FOTOELETTRONI DA INSTALLARE PRESSO LA **BEAMLIN**E "APE" DELL'ISTITUTO OFFICINA DEI MATERIALI, SEDE DI TRIESTE, DEL CONSIGLIO NAZIONALE DELLE RICERCHE.

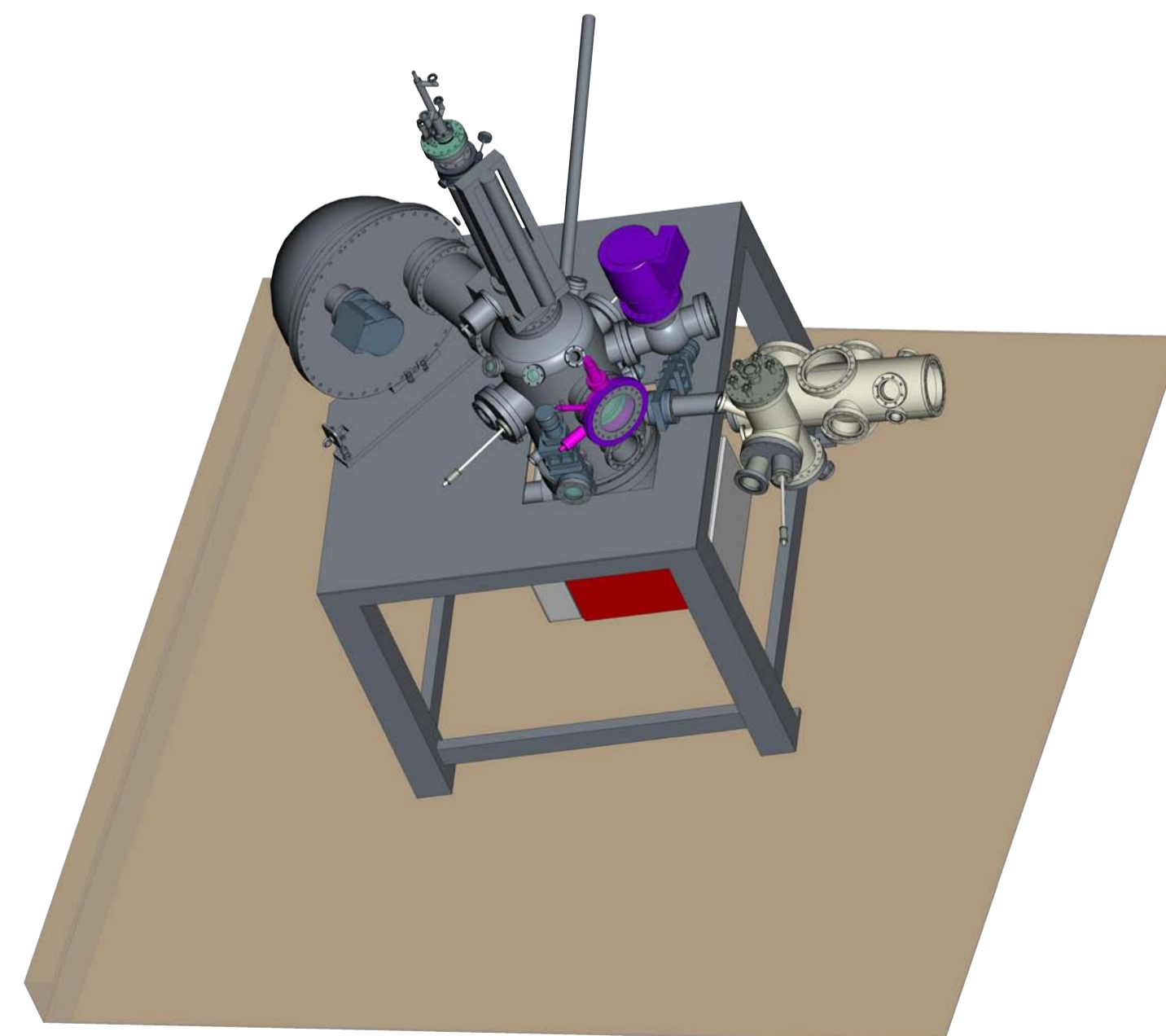
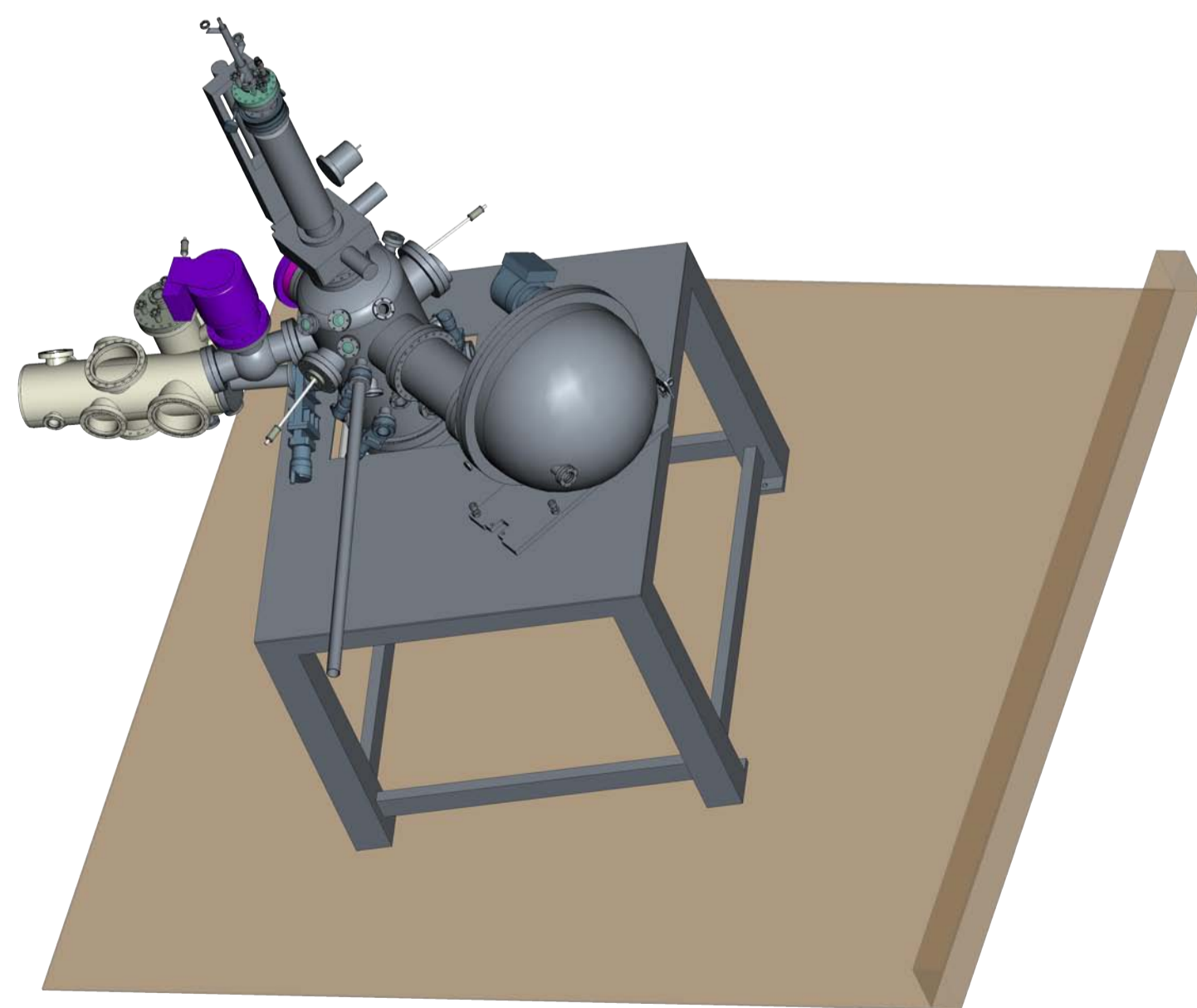
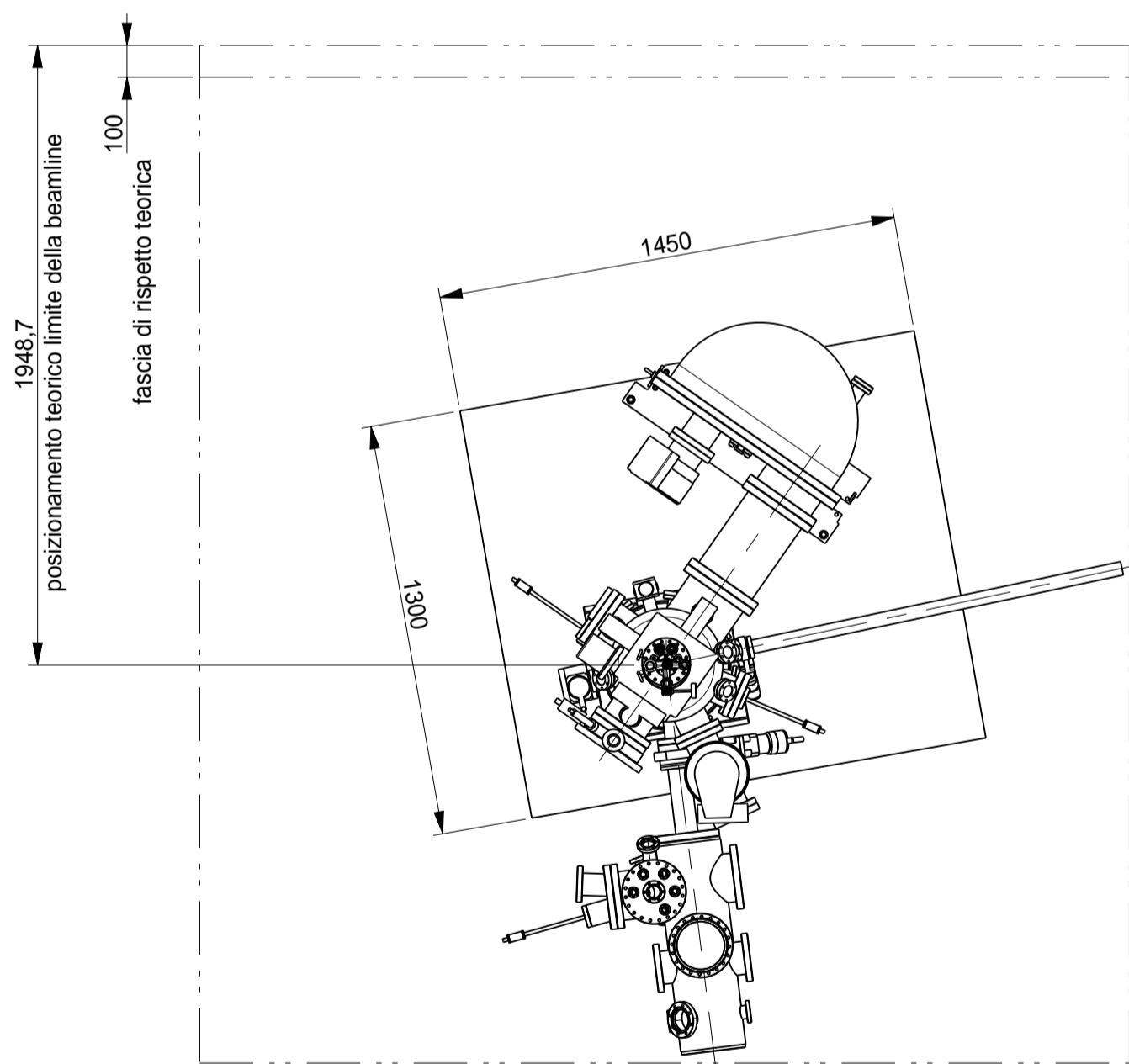
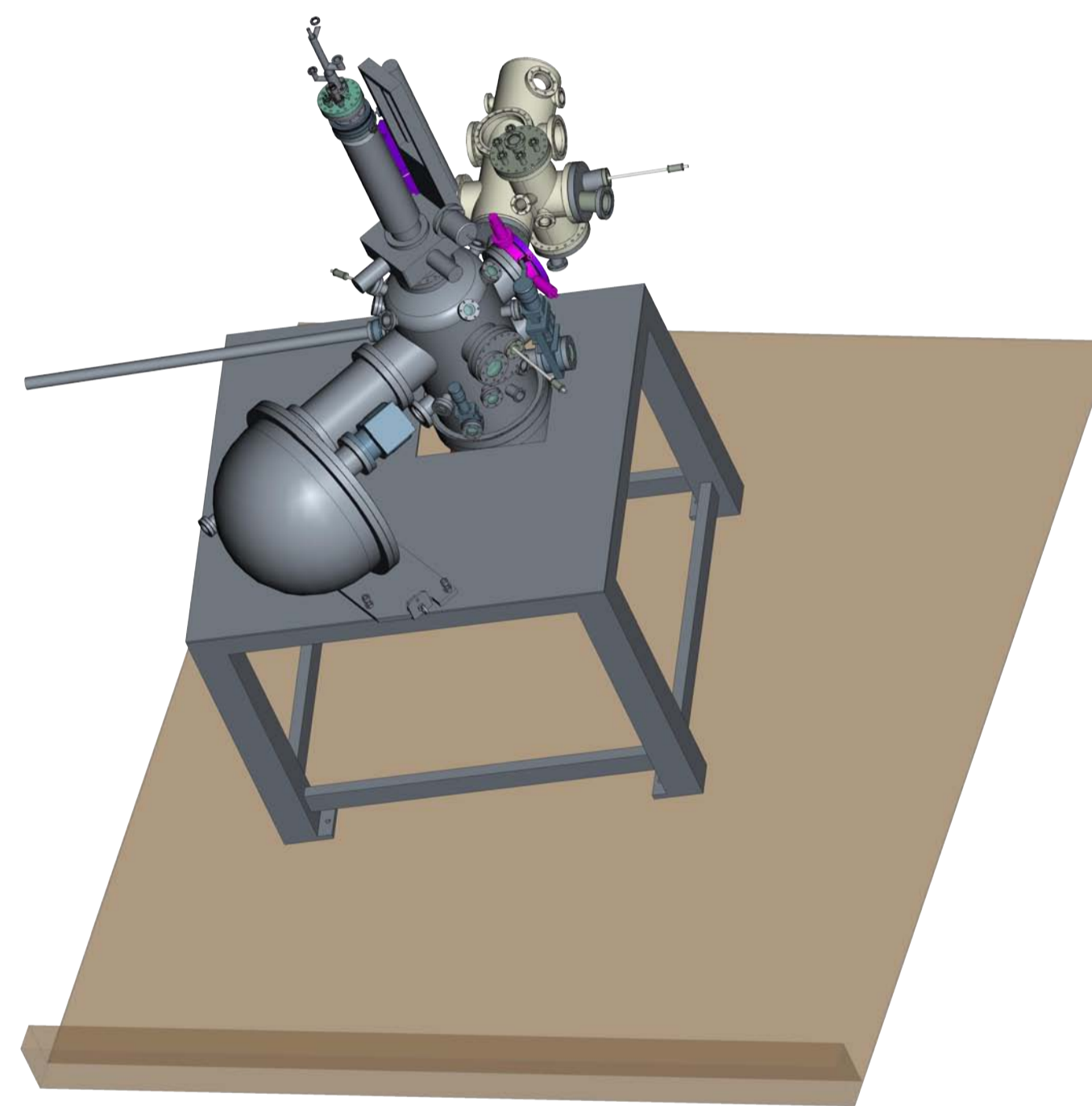
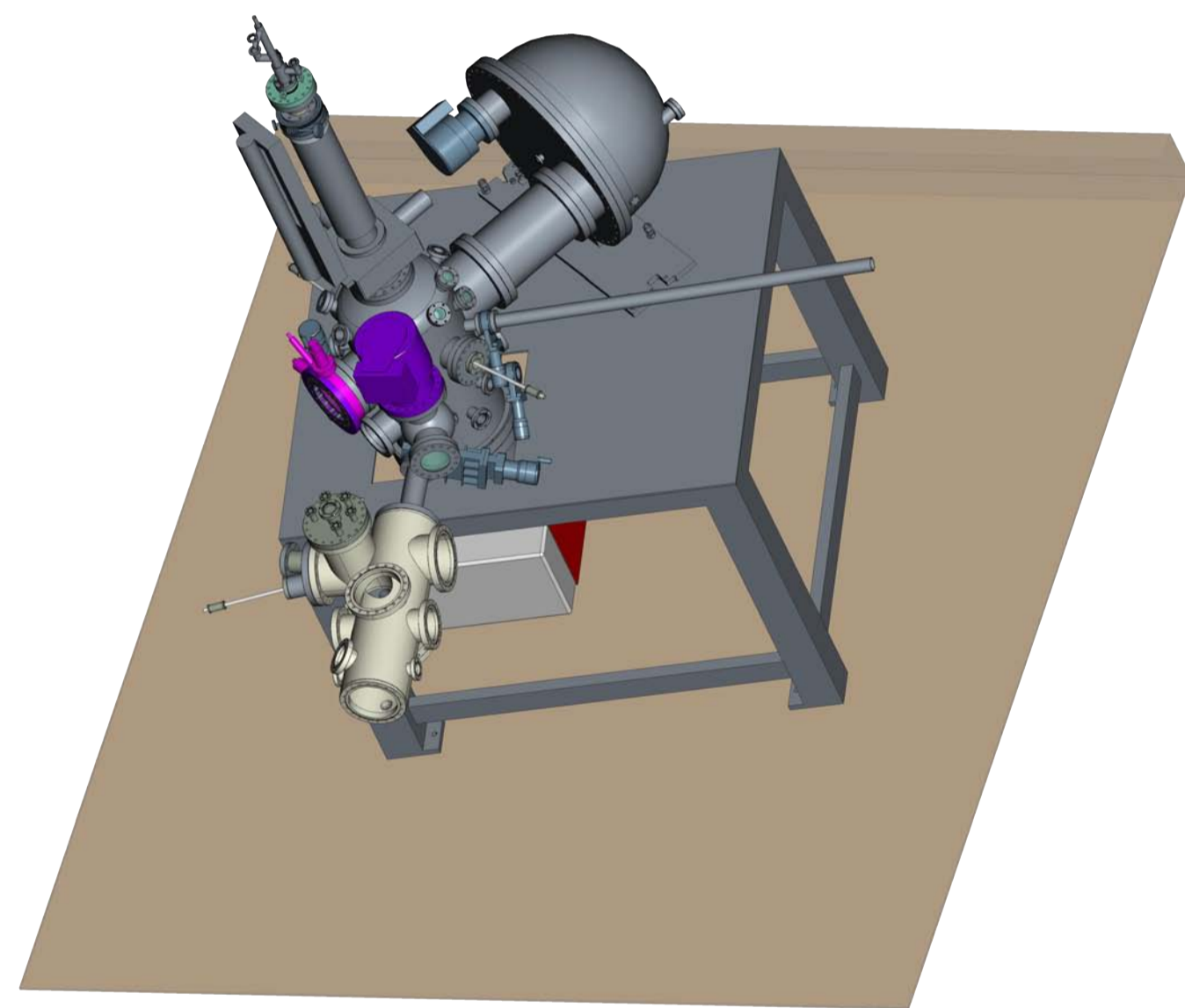
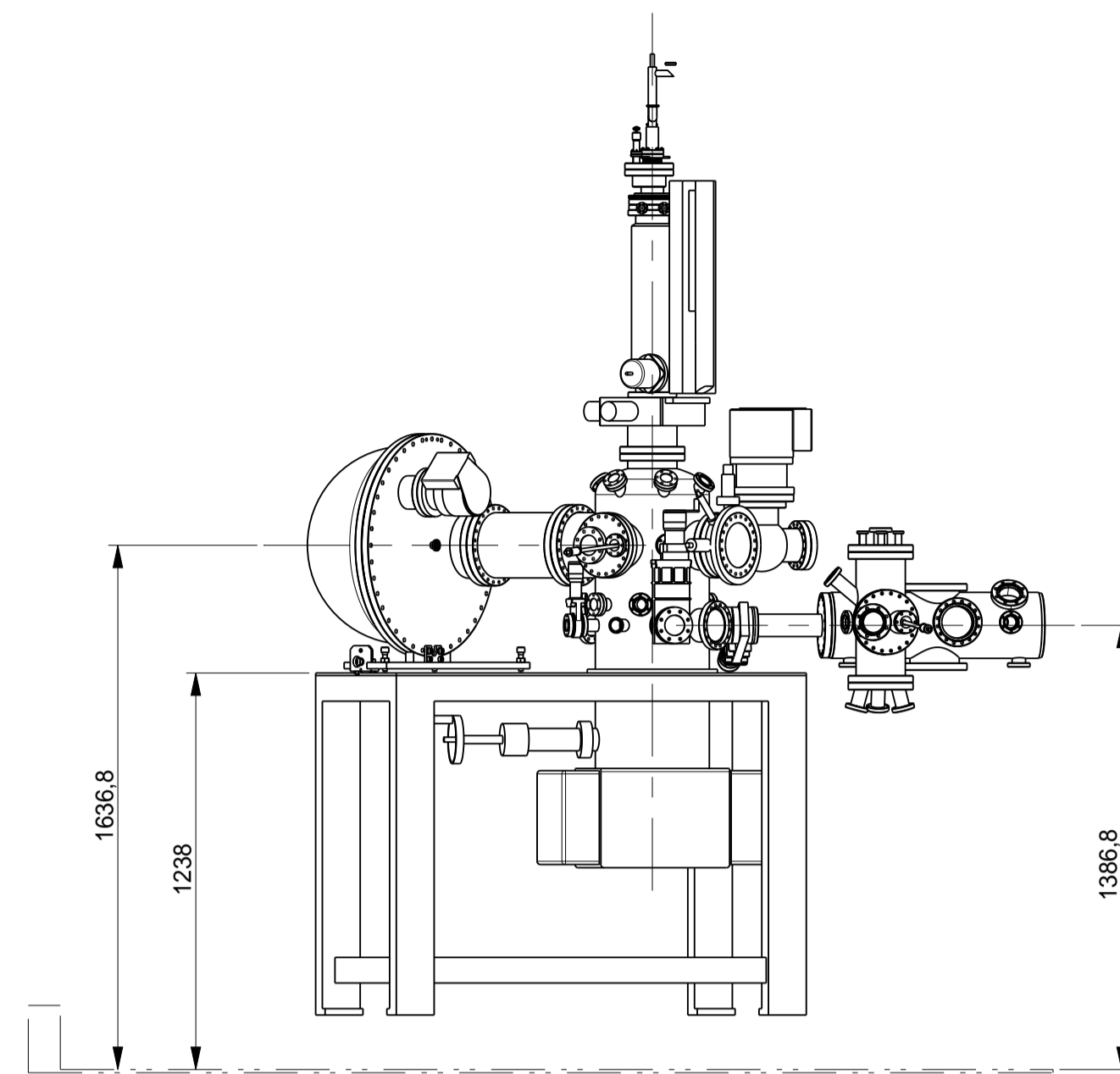
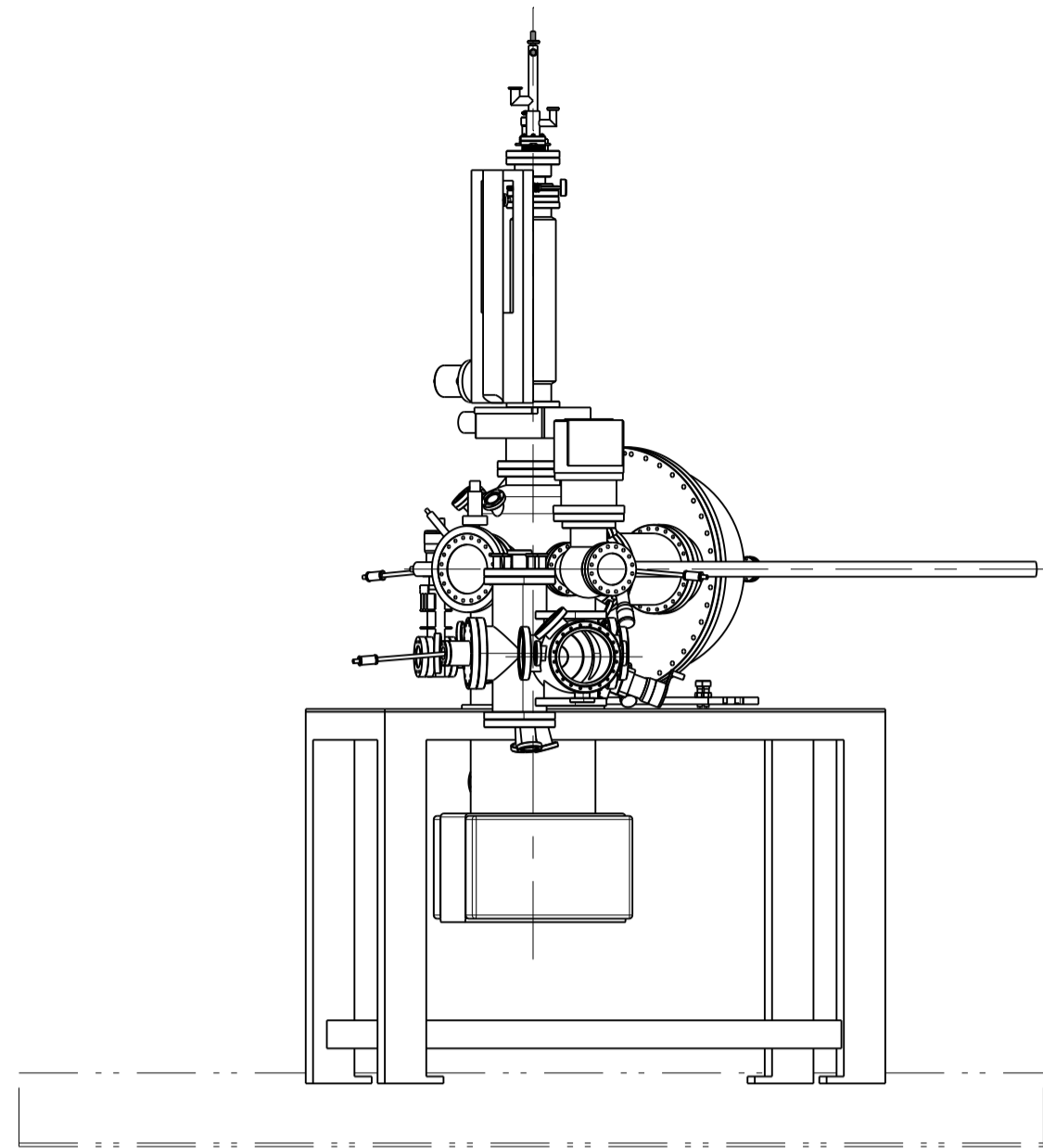
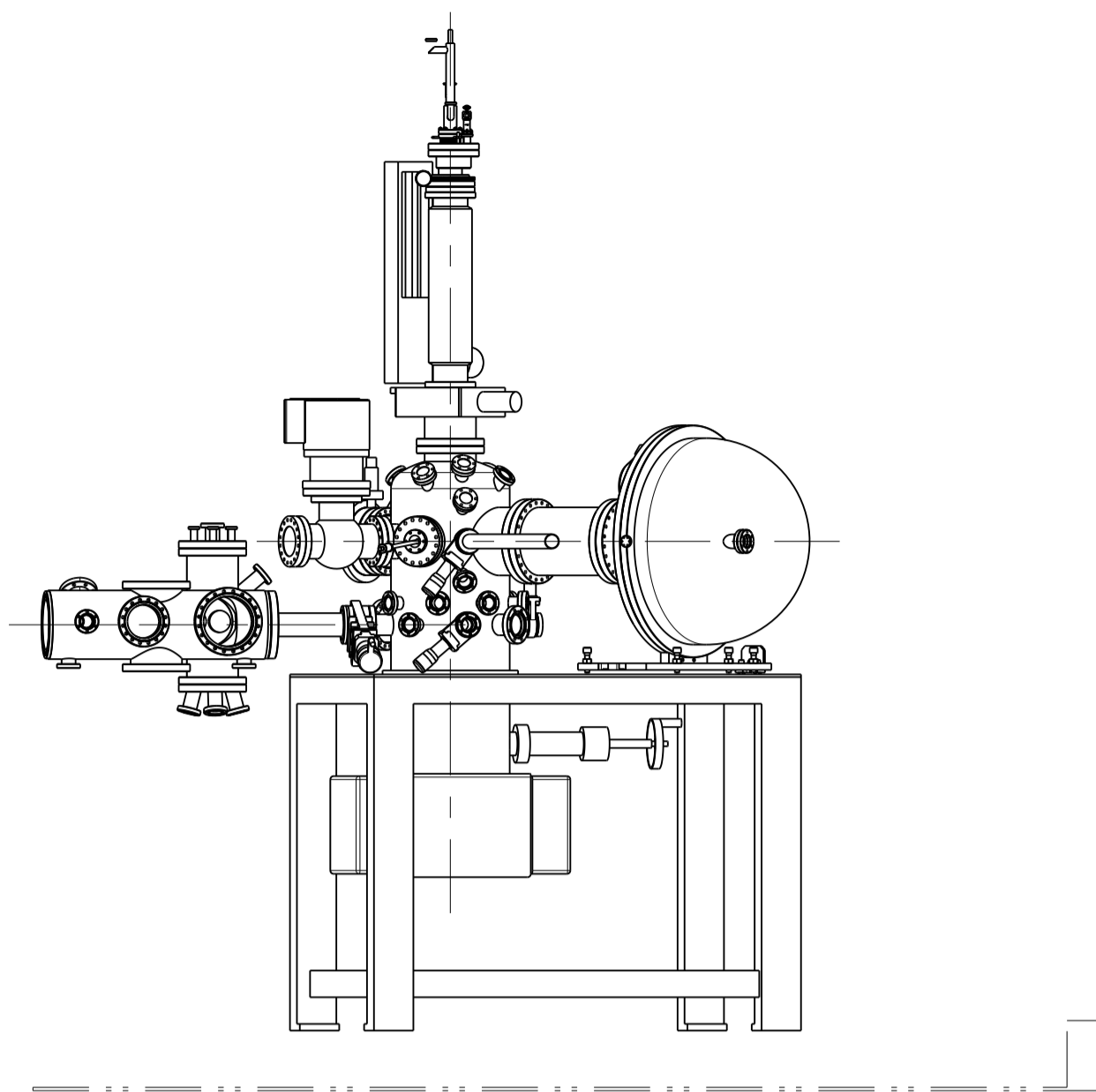
**CIG:**

---

**Corso Ferdinando Maria Perrone 24, I-16152 Genova**

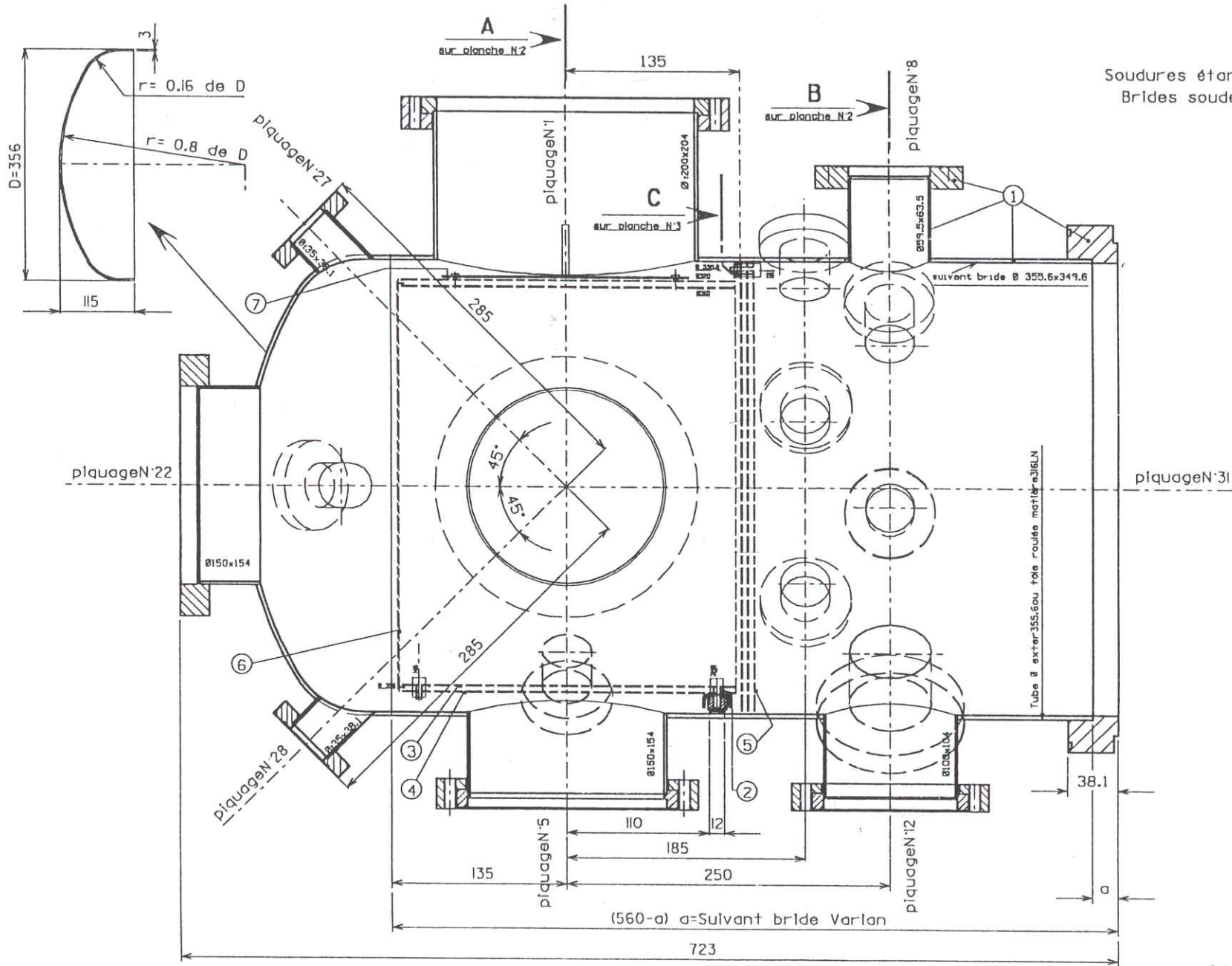
☎ (+39)01065-98750, fax -06302

Partita IVA IT 02118311006 – C.F. 80054330586



General Tolerance / Tolleranza generale: UNI EN 22768/1 - M		0.4	Not dim. Fillets	Not dim. Chamfers	Draft Angles
Length and Diam.	0.00 6.00 30.0 120 315 1000 2000 >	0.4	Raggi non quotati	Smussi non quotati	Storni gen.
Length e Diam.	6.00 30.0 120 315 1000 2000 4000 4000	0.25			
Tolerance	±0.1 ±0.2 ±0.3 ±0.5 ±0.8 ±1.2 ±2.0 ±3.0	0.2/100	REMOVE ALL PUNCHING BURRS AFTER MACHINING.		Gen. roughness
PROG.		0.2/100	ELIMINARE BAVE E SPIGOLI TAGLIANTI.		Rugosità gen.
MODEL	D.BENEDETTI				
DIS.	D.BENEDETTI	05-Apr-13			
<b>CNR - IOM</b>		MATERIALE		TRATTAMENTO	
<b>LABORATORIO TASC</b>		STUDIO STATO DI FATTO ZONA L.E. APE			
A4	SCALA 1/20	Nr. DISEGNO 12000000LIGHT01	FOGLIO 1 DI 1		ProENGINEER

Fond bombé 316L (SANDVIK Fei:02-38-41-41-41)



Soudures étanches au vide  $\leq 1.10^{-4}$   
Brides soudées trous hors-axe

PLANCHE 1/3

TOL. GEN. 2	0.3	STYPAZ	MATERIO. TECHNIQUE	Forme 1/3
STYPAZ	0.3	DRYER BUCKLE	DES. SEARIS	1/3
UNIVERSITE PERRE ET MAHE CLERC P10		LABORATOIRE DE CHIMIE PHYSIQUE U.S.A. P10		S.X-10/1

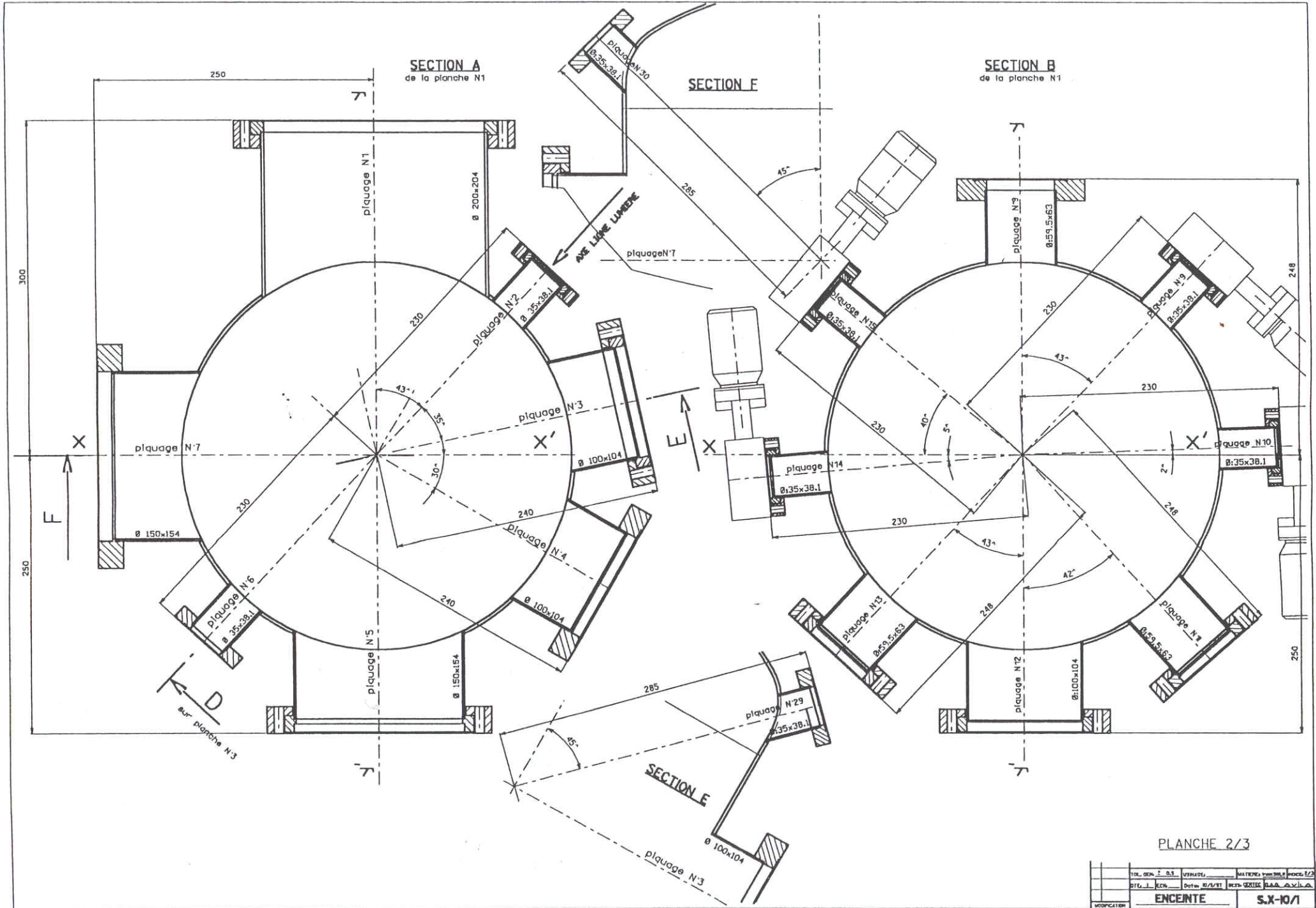
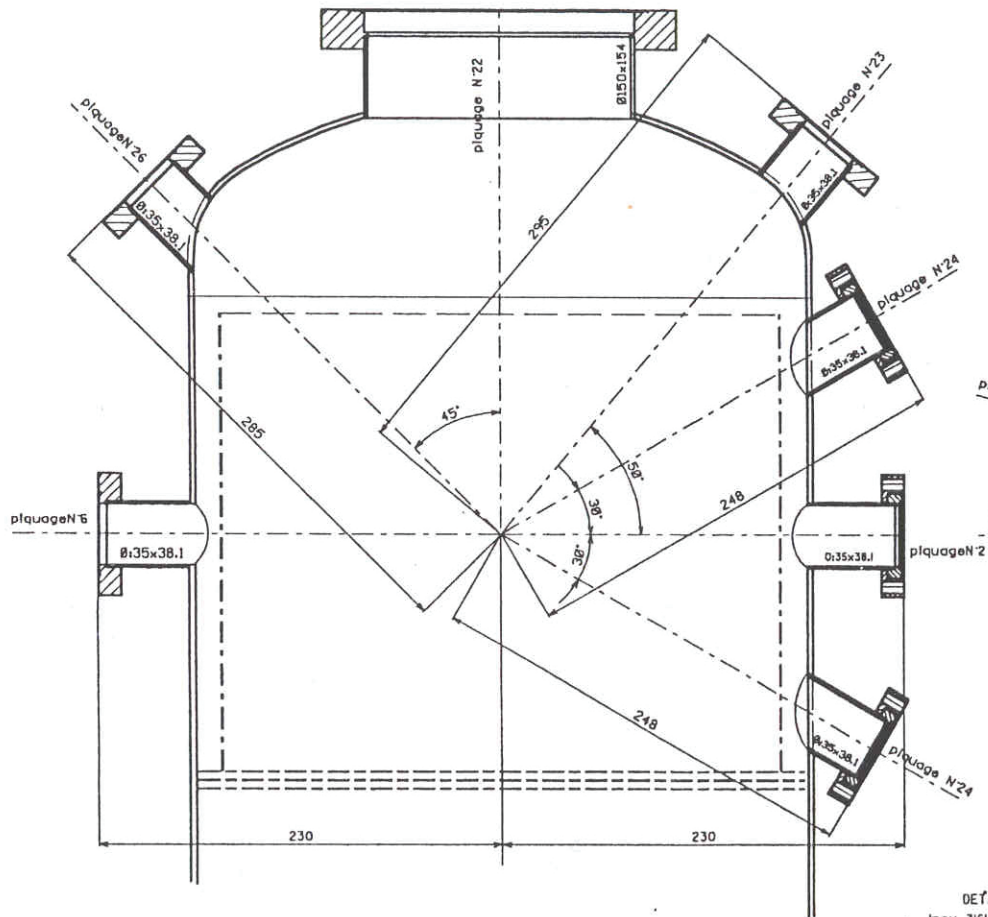


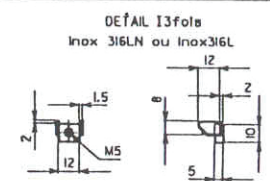
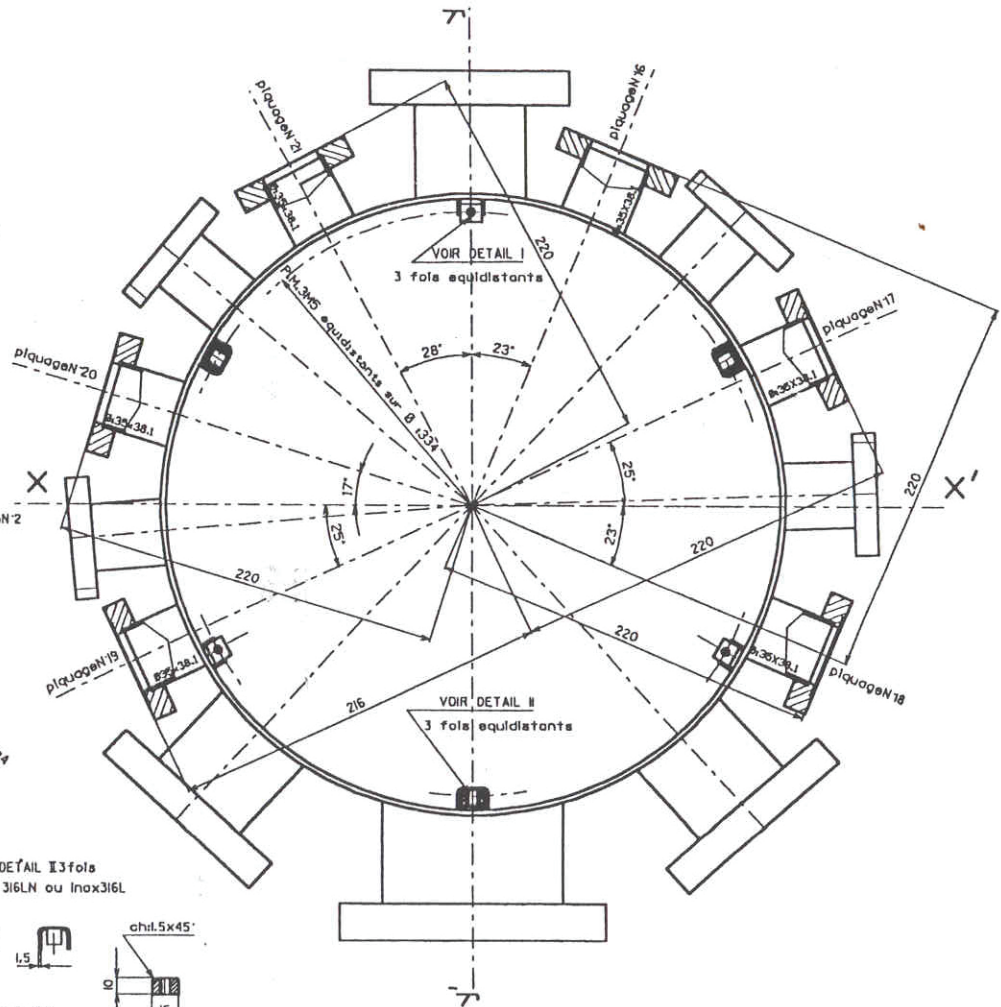
PLANCHE 2/3

TOL. GEN. 2 D3	VERIAGE	MATERI. 3030	POUR. 123
STU. 1	REV.	Date: 10/2/51	DEPT. OPTIC. LAB. A.C.I.A.
<b>ENCENTE</b>		<b>S.X-10/1</b>	
<small>                 MODIFICATION INTERVENUE APRIL 14 1951                  LEGERES ENCORE 3030 LEGERES ENCORE 3030             </small>			

**SECTION D**  
de la planche N°3



**SECTION C**  
de la planche N°1



DETAIL II 3 fois  
Inox 316LN ou Inox316L

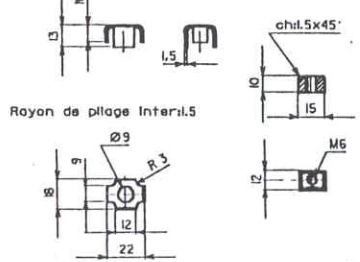


PLANCHE 3/3

TEL. GEN. 2 63	USINA DELI	MATERIE TRASMETTE	INDICE 3/3
DATE 1 1/83	DATA 10/1/83	INDICE CERTIFIC	INDICE 3/3
ENCENTE		S.X-10/1	